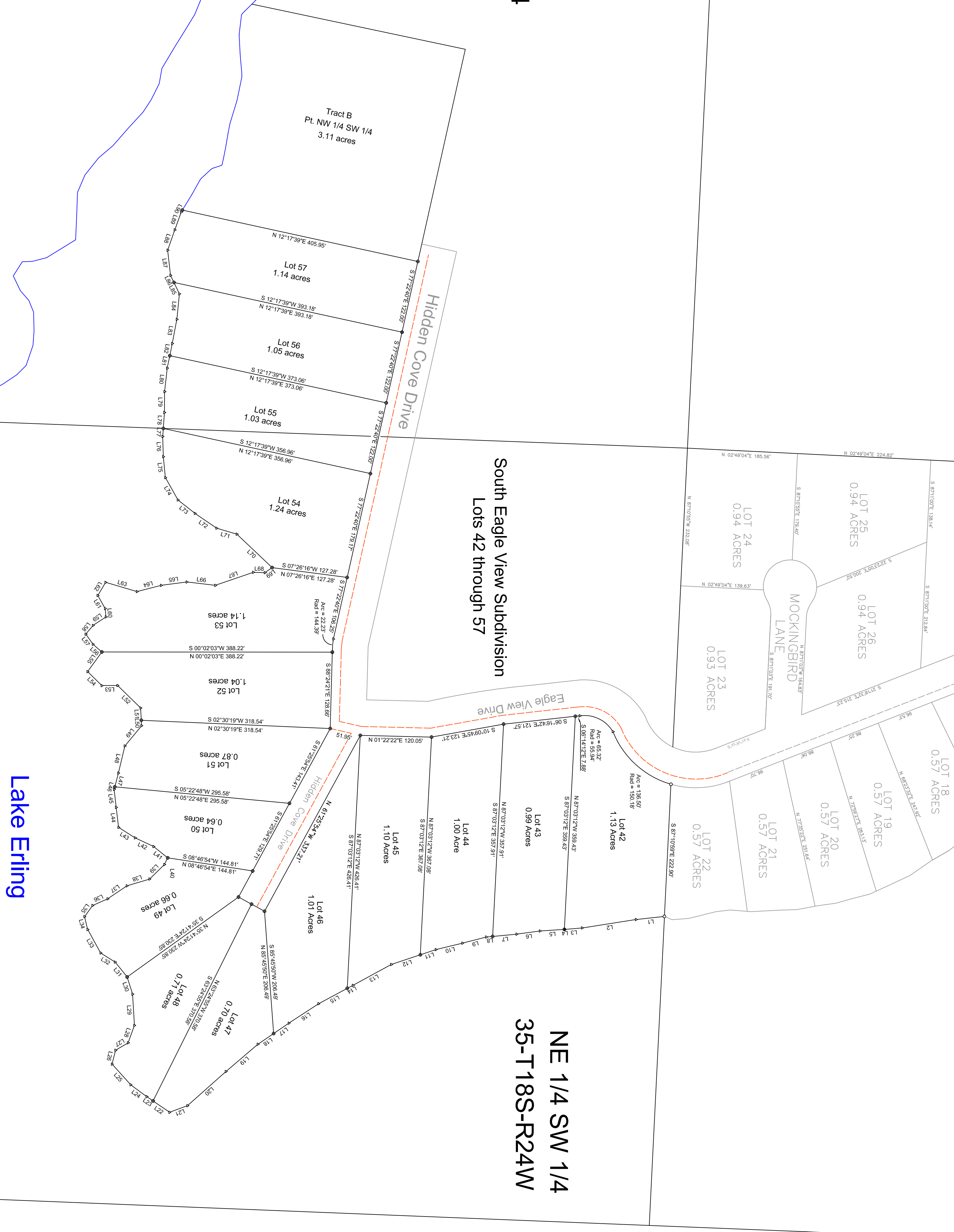


Beatings based on Eagle View Subdivision

NW 1/4 SW 1/4 35-T18S-R24W

NE 1/4 SW 1/4 35-T18S-R24W



Course	Bearing	Distance	Course	Bearing	Distance
L1	S 06°53'33" E	48.12	L56	S 54°04'41" W	40.78
L2	S 06°54'49" E	91.78	L57	S 41°11'38" W	13.89
L3	S 04°47'35" E	78.36	L58	S 54°17'40" W	20.86
L4	S 07°07'33" E	40.78	L59	N 33°04'49" W	26.01
L5	S 03°33'01" E	40.78	L60	S 84°17'01" W	14.31
L6	S 07°43'05" E	39.74	L61	S 89°07'54" W	25.72
L7	S 05°26'04" E	10.64	L62	N 89°07'54" W	25.72
L8	S 1°29'20" E	41.58	L63	N 16°22'29" E	55.11
L9	S 1°29'20" E	41.58	L64	N 14°43'42" W	42.06
L10	S 1°29'20" E	41.58	L65	N 06°41'02" E	46.56
L11	S 87°03'53" E	51.49	L66	N 18°55'38" W	61.53
L12	S 87°03'53" E	51.49	L67	N 18°55'38" W	61.53
L13	S 87°03'53" E	51.49	L68	N 18°55'38" W	61.53
L14	S 87°03'53" E	51.49	L69	N 18°55'38" W	61.53
L15	S 87°03'53" E	51.49	L70	N 18°55'38" W	61.53
L16	S 87°03'53" E	51.49	L71	N 18°55'38" W	61.53
L17	S 87°03'53" E	51.49	L72	N 18°55'38" W	61.53
L18	S 87°03'53" E	51.49	L73	N 18°55'38" W	61.53
L19	S 87°03'53" E	51.49	L74	N 18°55'38" W	61.53
L20	S 87°03'53" E	51.49	L75	N 18°55'38" W	61.53
L21	S 87°03'53" E	51.49	L76	N 18°55'38" W	61.53
L22	S 87°03'53" E	51.49	L77	N 18°55'38" W	61.53
L23	S 87°03'53" E	51.49	L78	N 18°55'38" W	61.53
L24	S 87°03'53" E	51.49	L79	N 18°55'38" W	61.53
L25	S 87°03'53" E	51.49	L80	N 18°55'38" W	61.53
L26	S 87°03'53" E	51.49	L81	N 18°55'38" W	61.53
L27	S 87°03'53" E	51.49	L82	N 18°55'38" W	61.53
L28	S 87°03'53" E	51.49	L83	N 18°55'38" W	61.53
L29	S 87°03'53" E	51.49	L84	N 18°55'38" W	61.53
L30	S 87°03'53" E	51.49	L85	N 18°55'38" W	61.53
L31	S 87°03'53" E	51.49	L86	N 18°55'38" W	61.53
L32	S 87°03'53" E	51.49	L87	N 18°55'38" W	61.53
L33	S 87°03'53" E	51.49	L88	N 18°55'38" W	61.53
L34	S 87°03'53" E	51.49	L89	N 18°55'38" W	61.53
L35	S 87°03'53" E	51.49	L90	N 18°55'38" W	61.53

Lake Erling

South Eagle View Subdivision Lots 42 through 57

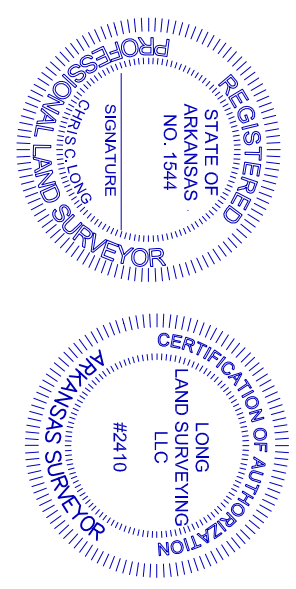
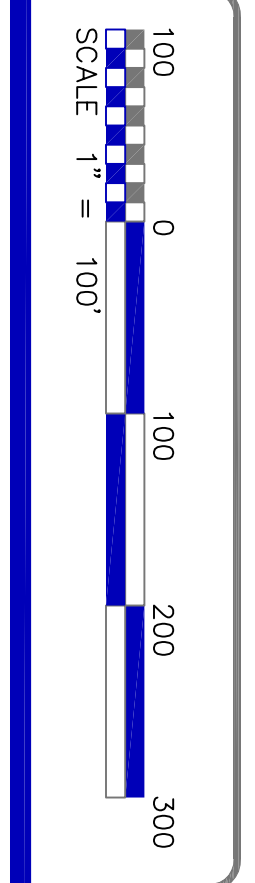
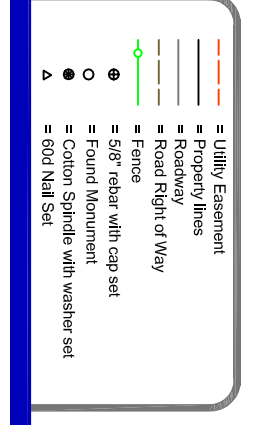
Tract B
Pt. NW 1/4 SW 1/4
3.11 acres

Hidden Cove Drive

Eagle View Drive

MOCKINGBIRD LANE

Plat of Survey for
South Eagle View Subdivision
Part NW 1/4 SW 1/4 &
Part NE 1/4 SW 1/4
Section 35-T18S-R24W
Lafayette County, Arkansas



Long Land Surveying, LLC
134 Lafayette 41
Buckner, AR 71827
Phone: (870)553-4888 or (870)804-3173
Email: longland@centurylink.net